



INVESTMENT STONES SRL

V I E W T H E E A R T H ' S T R E A S U R E S

2
0
1
9

C R E A T I V E I N T E R I O R D E S I G N G R O U P C A T A L O G U E

INTRODUCTION

INVESTMENT STONES was established to supply the world with marble, granite and stoneware items directly from our quarries and mines here in Egypt.

Especially for manufacturing our marble and granite products we have our Cairo-based factory and workshops, including all the top of the range machinery necessary: gang-saws, automatic- and semi-automatic polishers, automatic- and semi-automatic cutting machines, contouring machines and soon there will also be two full automatic processing lines for marble & granite with a modern C.N.C machine.



Our main customers are the people who deal in, respect or just simply love the world of stoneware. This includes those in the building and construction industry, factories, merchants, importers & exporters, architects, executing engineers, decorative engineers, antique lovers and collectors and most importantly the home-owner who wants to add style, quality and value to his home with marble or granite.

We have created unique and innovative designs with the co-operation of Hazem Shoukry Designs, in which we are his soul agent. He is very well respected in the industry and many consider him as the best natural stone designer in Egypt. We also have the capability to manufacture the stone according to the customers' specifications. This enables us to cater for the range of preferences requested by our buyers from all over the world.

We are currently producing and shipping large sizes (16"x16", 18"x18", 24"x24" and larger) of slabs and other materials with reliable efficiency and high quality.



Shower Tray

The shower tray comprises of is a base support structure that supports walls where the lower edge is spaced slightly away from the shower tray to define a passage. This passage allows the water to flow along the inner surface of the walls and fall into the shower tray. To keep water inside the unit air is passed through the passage formed between the shower tray and the walls defining the shower cabin and this air stops the water leaking retaining the water inside the shower tray.

Here we preview 5 selections



SHT 1



SHT 2



SHT 3



SHT 4



SHT 5

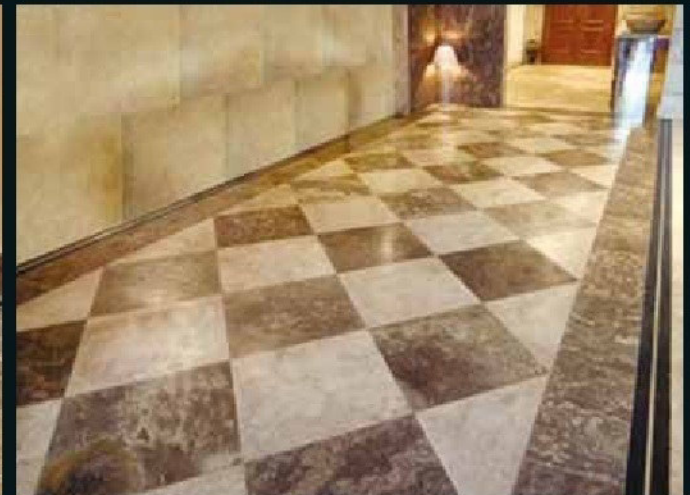


Tiling

Indoor Flooring

Indoor flooring is the most important feature of the home, it is the focal point of the room and the base of all other means of interior decoration, it should therefore be made from natural stone. The wide variety of color of natural stones gives a spectrum of choices of flooring each with a spectacular interior finish. The fact that the natural stones are heat and water resistant, in addition to an electrical isolator acting as coverage for the wires and pipes underground, only adds to their appeal. Spilt liquids, dust, scratches and other incidents can be received by the natural stone safely by applying the right maintenance and stone care methods.

You can choose the material and finishing from our collection. You can either send us the floor area and the tile sizes you would like, guided by our standard sizes, or **we** can advise you on what would be the best size to use. If you would like some assistance from one of our expert designers we will be glad to answer any of your email requests and suggest what we feel would be most appropriate for you.



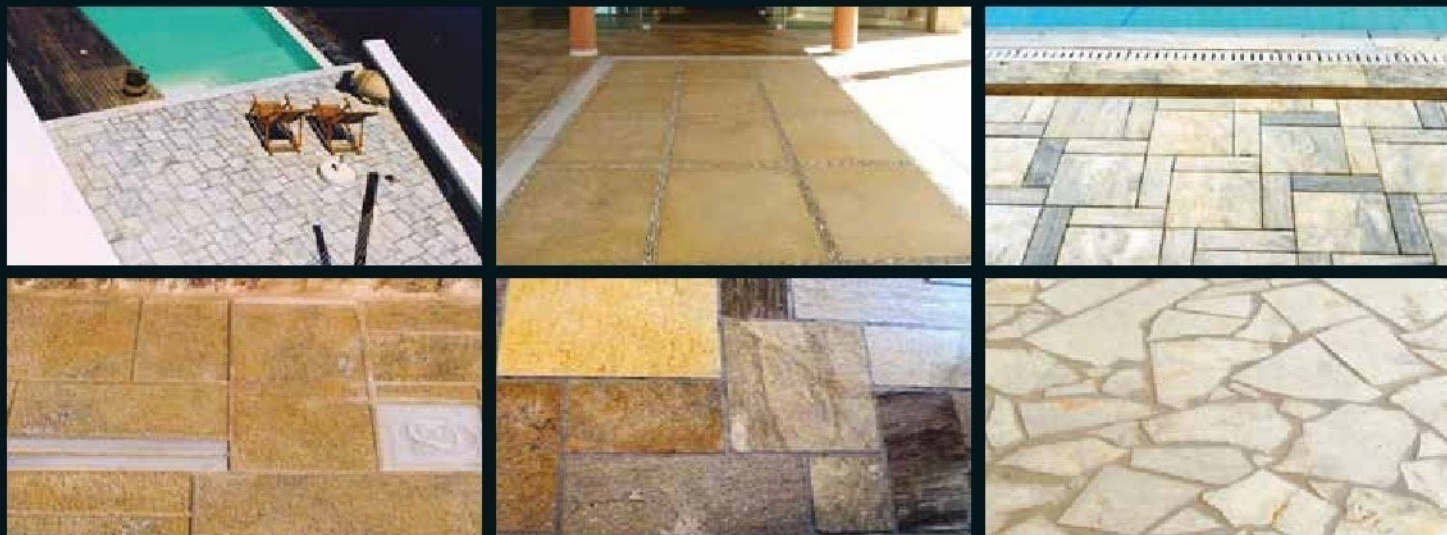


Tiling

Outdoor Flooring

Outdoor flooring refers to the paved areas like streets and pavements, large business complexes & housing developments, and other industrial areas where the upper-earth is no longer exposed. It is covered with hard tiles that allows straight, clean and anti-rain paving as well as adding to the beauty of the area. Natural stones are the best for this application because they are strong and able to withstand all weather conditions.

We offer different styles for the landscape with different styles of finishing. Here are some from our collection.



Stairs

Outdoor stairs

Anti-slip stairs and floors

We are offering anti-slip stairs & flooring, it is the finishing technique that grooves a pattern into the existing surface creating instant traction improvement to slippery stairs & floors. The shallow groove acts like a tread and removes the film of water preventing hydroplaning on the sole of your shoe. Smooth surfaces underfoot seem somewhat precarious, but mixed with water can become potentially lethal. Slip resistant stairs and floors can prevent serious injuries. Anti-slip finishing is most suitable for stairs, outdoor floors and in swimming pool areas.





Tiling

Mosaic

Mosaic is the art of creating images with small pieces of tiles. It may be a technique of decorative art, an aspect of interior decoration or of cultural and spiritual significance for example in a cathedral.

There are three main methods: the direct method, the indirect method and the double indirect method. Read more about the three techniques on our website www.cidegypt.com

Available mosaic tile sizes

20 x 20mm - 9.5 sheets per m², used for pool mosaic
20 x 60mm - Sheet size: 318 x 318mm (60 mosaics per sheet, 10 sheets per m²)

20 x 40mm - 11.11 sheets per m²

95 x 45mm - used for walls and bathroom floors

22 x 73mm - 13 sheets per m²

25 x 25mm - 10 sheets per m²

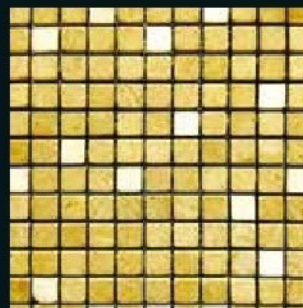
18 x 18mm - 10.75 sheets per m² for hexagons

10 x 47mm - 11 sheets per m²

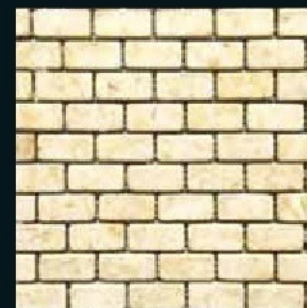
We can provide any design of mosaic. Send your design and the applied area's dimensions to our e-mail: info@cidegypt.com and we will be able to determine the amount and collection of material needed.



Honed Galala Tiles



Tumbled Golden Tiles



Tumbled and Washed Khatmia Tiles



Tumbled & Honed Galala Tiles



Sunny & Golden Diamond Tumbled Tiles.



Golden, Melia Brown & Galala Random



Tumbled & Honed Galala Tiles



Tumbled & Polished Tiles



Random pattern



Golden, Meli brown & Galala (flamed tiles)



Galala tumbled (outdoors pattern)



Meli Brown Slates



Tumbled Tiles



Tumbled & Washed Khatmia & Galala Tiles



Tiling

Swimming Pools Tiles

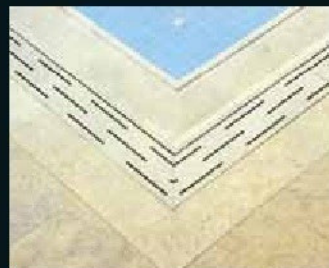
Swimming pool tiles are made water and frost proof to withstand erosion and they should be able to withstand extreme climate changes. Anti-slip pool tiles are necessary to avoid serious injury. Rough finishing can be added to the tiles to provide a safer wet area.

We make a range of mosaics perfectly suited to line swimming pools as well as an extensive choice of tiles suitable for pool surrounds

We offer expert advice and guidance on pool tiles and wet area surrounds you will also benefit from our competitive pricing.



SP 17-18.



SP 19



SP 20 Edge Tile



SP 22 Edge Tile



SP 23 Mosaic



SP 24 Shell Tile



INVESTMENT STONES PRODUCTION

Egyptian Marble tile sizes

30.5cm x 30.5cm, 45.7cm x 45.7cm and 61cm x 61cm with a thickness of 1cm or 1.5cm

30cm x 30cm, 40cm x 40cm, 30cm x 60cm, 40cm x 60cm and 60cm x 60cm with a thickness of 2cm

30cm x 30cm, 40cm x 40cm, 30cm x 60cm, 40cm x 60cm and 60cm x 60cm with a thickness of 3cm

30cm x 30cm, 40cm x 40cm, 30cm x 60cm, 40cm x 60cm and 60cm x 60cm with a thickness of 4cm

Standard slabs sizes

Egyptian Granite tile sizes:

30cm x 30cm, 40cm x 40cm, 30cm x 60cm, 40cm x 60cm and 60cm x 60cm with a thickness of 2cm

30cm x 30cm, 40cm x 40cm, 30cm x 60cm, 40cm x 60cm and 60cm x 60cm with a thickness of 3cm

30cm x 30cm, 40cm x 40cm, 30cm x 60cm, 40cm x 60cm and 60cm x 60cm with a thickness of 4cm

Standard slabs sizes

International Marble

30cm x 30cm, 40cm x 40cm, 30cm x 60cm, 40cm x 60cm and 60cm x 60cm with a thickness of 2cm

International Granite

Standard slabs can be sized to suit

Mosaic tiles

Customized Mosaic tiles:

20 x 20mm - 9.5 sheets per m2, often used for swimming pools

20 x 60mm - Sheet size: 318 x 318mm (60 mosaics per sheet, 10 sheets per m2)

20 x 40mm - 11.11 sheets per m2

95 x 45mm used mainly for walls and floors

22 x 73mm - 13 sheets per m2

25 x 25mm - 10 sheets per m2

18 x 18mm - 10.75 sheets per m2 for hexagons

10 x 47mm - 11 sheets per m2

Other thickness and sizes are available on request



Edges

Double Edge:

Some of the edges can be added to another for a thicker appearance. This is applicable for edges ED01, ED07, ED08 and ED10. Examples of this can be seen in the designs below.



Name: Straight
Code: ED01
Height: 1 1/4", 3/4"



Name: 1/4 Round
Code: ED02
Height: 1 1/4", 3/4"



Name: 1/4 Bevel
Code: ED03
Height: 1 1/4", 3/4"



Name: 1/4 Round T&B
Code: ED04
Height: 1 1/4", 3/4"



Name: Half Bullnose
Code: ED05
Height: 1 1/4", 3/4"



Name: 1/2 Bevel
Code: ED06
Height: 1 1/4", 3/4"



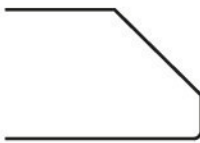
Name: Full Bullnose
Code: ED07
Height: 1 1/4", 3/4"



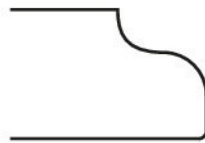
Name: Demi Bullnose
Code: ED08
Height: 1 1/4", 3/4"



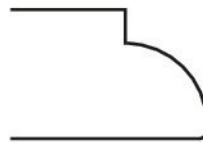
Name: 1/4 Bevel T&B
Code: ED09
Height: 1 1/4", 3/4"



Name: 1" Bevel
Code: ED10
Height: 1 1/4", 3/4"



Name: Ogee
Code: ED11
Height: 1 1/4", 3/4"



Name: Dupont
Code: ED12
Height: 1 1/4", 3/4"



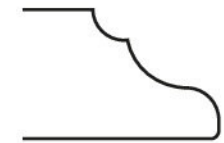
Name: Waterfall
Code: ED13
Height: 1 1/4", 3/4"



Name: Cove
Code: ED14
Height: 1 1/4", 3/4"



Name: Stair Thread
Code: ED15
Height: 1 1/4", 3/4"



Name: Cove Ogee
Code: ED16
Height: 1 1/4", 3/4"



Finishing

Finishing Introduction

Various kinds of finishes are applied to raw stone surfaces in order to achieve specific appearances.

Finishing procedures are used to enhance the beauty and durability of the stone's surface and we finish according to our customer's preference.



Polished

A shiny, mirror-like finish. Marble, Limestone & Granite slabs are polished by large polishing machines, which progressively grind the stone from the rough saw-cut surface to a spectacular mirror-like finish.
Applications: walls & floors (interior)



Honed

Honed finish has a matte or satin finish for a softer, more subdued look. This is achieved by stopping just short of the last stage of polishing.
Applications: walls & floors (interior)



Bush-hammering

A mechanical process that produces everything from a very subtle to a very rough textured surface.
Applications: walls (interior & exterior) & floors (exterior)



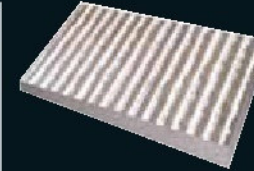
Split face

Split face surfaces are those which are left natural after manual splitting of the Stone. This finish showcases the natural beauty and earthy tone of the Stone.
Applications: wall cladding (interior & exterior)



Tumbled

Tumbling gives the surface a textured and antique look. The edges are rounded and imperfect.
Applications: walls & floors (interior & exterior)



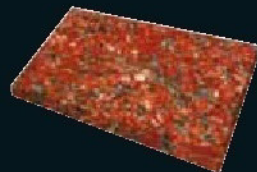
Graveto Also

A mechanical process that produces everything from a very subtle to a very rough textured surface.
Applications: walls (interior & exterior) & floors (exterior)



Chiseling

This surface is produced manually using both chisels and hammers; it is mainly used in wall claddings and facades.
Applications: walls & floors (interior & exterior)



Flamed

Flamed surfaces are produced by applying blowtorch-strength heat to the surface of Granite. This treatment pops some of the crystals and creates a deeply textured surface. In addition to its rough beauty, flamed Granite has a highly textured surface, providing a non-slip surface that is ideal for exterior uses
Applications: walls & floors (exterior)



Brushed

A Stone finish produced by a harsh scrubbing of the surface with a wire brush.
Applications: walls & floors (interior & exterior)



Sandblast

Sandblasting is done by blowing a mixture of coarse sand particles and air on the Stone surface.
Applications: walls (interior & exterior) & floors (exterior)



Facial chiseling

This surface is produced manually using both chisels and hammers; it is mainly used in wall claddings and facades.
Applications: walls & floors (interior & exterior)



Acid treated

Stone surfaces are treated by select acids to give them a unique antique finish. (Applications: walls & floors (interior))



Graveto

This surface is produced manually using both chisels and hammers; it is mainly used in wall claddings and facades.
Applications: walls & floors (interior & exterior)



Egyptian Marble



1. Sunny light ME 10-1



2. Sunny medium ME 10-2



3. Sunny Dark ME10-3



4. Selivia light ME11-1



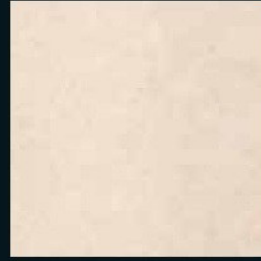
5. Selivia dark ME11-2



6. Mil Brown ME12



7. Galalah classic ME13-3



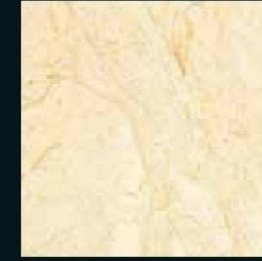
8. Galalah Extra ME13-1



9. galalah gold ME13-4



10. galalah select ME13-2



11. Filleto meshbah ME15



12. Brescia ME17



13. Tropical Rosa ME18



14. Triesta gold ME19



15. Golden Creama flower
ME20



16. Golden Creama Selsela
ME20



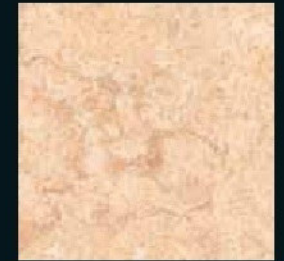
17. Golden Sinai ME21



18. Khatmia ME22



19. Cream Samaha ME23



20. Fantasia flower ME24



21. Fura Selsela ME26



22. Fura Flower 4 ME



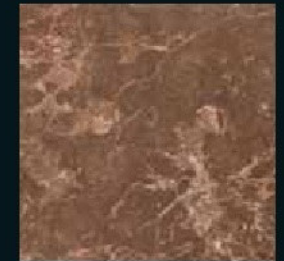
23. Catrina 2 ME28



24. Deserto ME29



25. Imperial ME 30



26. Egyptian Emprador
ME 31



Granite

Granite is an igneous rock, formed from liquid magma, cooled slowly to form a substance approaching the hardness and durability of diamonds. Granite contains three essential minerals: feldspar, quartz and mica. These minerals are present in different proportions, giving each form of Granite its own color from pink to dark gray or even black depending on their chemistry, texture and structural characteristic.

Granite is ideally suited for extreme conditions, as Granite is nearly always massive (lacking internal structures), hard and tough, and therefore it has gained widespread use as a construction stone. It resists wear, deterioration and weathering, while maintaining its natural beauty and finish indefinitely. The average density of granite is 2.75 g/cm³ and its viscosity at standard temperature and pressure is ~4.5. Around 6.5 on the

Mohs Hardness. Excellent heat, scratch and burn resistance. Porous material.

It is used in kitchen counter tops and islands, residential and commercial bathroom vanities, tub and shower surroundings, flooring, fireplace surroundings, furniture and transaction tops, bathtubs, sinks, wall cladding and stairs.

Egyptian Granite



1. Gandona Aswan GE10



2. Karnak Gray GE11



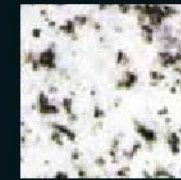
3. Red Aswan Light GE12



4. Royal Red GE13



5. Verdi Ghazal GE14



6. Bianco Halayb GE15



7. Nero Aswan GE16



8. Rosa El-Naser GE17



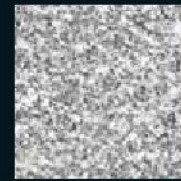
9. Shabah Sinai GE18



10. White Safaga GE19



11. Zeatone GE20



12. Ramady Sherka GE21



13. Forsan GE22



14. Pink Aswan GE23



15. Bianco Nouva GE24



16. Rosa Shayeb GE25

Marble Name	Code	Modulus Of Rupture Mpa.(ASTM C99)	Flexural Strength Mpa. (ASTM C880)	Abrasion Resistance hardness (ASTM C241)	Absorption by Weight % (ASTM C170)	Density (Kg/m3) (ASTM C97)	Compressive Strength Mpa. (ASTM C170)
1 Gandona Aswan	GE10	13.75	4.03	98.33	0.19	2630	140.48
2 Karnak Gray	GE11	20.3	28.06	72.5	0.09	2630	160
3 Red Aswan Light	GE12	7.6	8.8	81	0.06	2670	152.25
4 Royal Red	GE13	9.5	15	243	0.3	2580	139.5
5 Verdi Ghazal	GE14	17.7	9.18	64.3	0.2	2635	175
6 Bianco Halayb	GE15	18.56	7.01	116	0.26	2675	162.96
7 Nero Aswan	GE16	7.6	8.8	81	0.06	2670	152.25
8 Rosa El-Naser	GE17	13.75	4.03	98.33	0.19	2630	140.48
9 Shabah Sinai	GE18	13.75	4.03	98.33	0.19	2630	140.48
10 White Safaga	GE19	19.5	29	72.3	0.19	2643	161.2
11 Zeatone	GE20						
12 Ramady Sherka	GE21						
13 Forsan	GE22						
14 Pink Aswan	GE23						
15 Bianco Nouva	GE24						
16 Rosa Shayeb	GE25						



Hashma Sand Stone

Hashma Sandstone is a sedimentary rock composed mainly of sand-size mineral or rock grains. Most sandstone is composed of quartz and/or feldspar because these are the most common minerals in the Earth's crust. Like sand, sandstone may be any colour, but the most common colours are tan, brown, yellow and red.

Hashma density is 2156Hardness calculated on Moh's Scale 6.5.

It's strength and water resistance characteristics makes it perfect for outdoor and indoor cladding, counter tops, exterior items such as plant pots and benches, flooring and table tops.

We are manufacturing Hashma Products

Marble Name	Code	Modulus Of Rupture Mpa.(ASTM C99)	Flexural Strength Mpa. (ASTM C880)	Abrasion Resistance hardness (ASTM C241)	Absorption by Weight % (ASTM C170)	Density (Kg/m3) (ASTM C97)
1 Hashma	ME24	1200	1100	21.3	7.39%	2156





Alabaster

Alabaster is a name applied to varieties of two distinct minerals: gypsum ;a hydrous sulfate of calcium; and calcite ;a carbonate of calcium. The former is the alabaster of the present day; the latter is generally the alabaster of the ancients.

The two kinds are readily distinguished from each other by their relative hardness. The gypsum kind is so soft as to be readily scratched by a finger-nail (Mohs hardness 1.5 to 2), while the calcite kind is too hard to be scratched in this way (Mohs hardness 3).

The finer kinds of alabaster are largely employed as an ornamental stone, especially for religious decoration and for the rails of staircases, sculpture and as columns in great halls. Its softness enables it to be readily carved into elaborate forms, but its solubility in water renders it inapplicable to outdoor work. Powdered alabaster has been used as a paper filler and paint pigment called mineral white or terra alba.

The purest alabaster is a snow-white material of fine grain. It can also be associated with an oxide of iron, which produces an attractive brown clouding and veining in the stone.

CIDG is ready to manufacture and supply all Alabaster art work shall be requested.



Marble Name	Code	Modulus Of Rupture Mpa.(ASTM C99)	Flexural Strength Mpa. (ASTM C880)	Abrasion Resistance hardness (ASTM C241)	Absorption by Weight % (ASTM C170)	Density (Kg/m3) (ASTM C97)
1 Alabaster	ME 25	2100	1600	42.7	0.03	2732



Assurances & Quality Control

Features and benefits of

- **We** use only the finest quality marble.
- **We** craftsmen are of the highest standard
- **We** incorporates both modern day and traditional design.
- **We** applies superb finishing techniques to all its products.
- **Our** Statues are produced to mirror the images supplied
- **Our** range caters for all tastes and budgets
- **We** brings both practicality and beauty to any design

Promise

- Competitive pricing
- Prompt response
- Open and honest communication
- Punctual delivery
- Complete accuracy
- Commitment to quality and service

Quality Control Statement

Marble is always supplied in grade one quality.

Surface Treatment is performed by treating the slab/tile surface with adhesive before it's polished (risen and epoxy depend on the material).

Polishing will be uniform throughout the slabs/tiles. Reverse Side of **our** slabs or tiles will be flat to ensure even application

Thickness +/- 1.0mm in tolerance for slabs





Packing & Shipping

We use the highest international standards for shipping and packing to provide excellence and to insure that our products reach our clients in the best possible condition.

Wooden Crates

We use fine quality of wood for making crates.

Impact Protection

We use different impact resistant materials to protect the product such as Thermocol & Foam.

Iron Strips

To increase the strength we use iron strips.





From order to delivery

Sales and Order Process

Your order processes are outlined below, explaining every step from your initial order and quote through to delivery and installation.

1. Using our website or catalogue select the product, the type of the material and the colour that you would like the product to be manufactured in and note the product code.
i.e 1" x 1" Tiles, Marble, Black – PC: TMB 0123
2. When ordering tiles, please be sure to cite the size you require. Our website shows standard "sizes available." Should your preferred size not be listed you can request custom sized tiles to be manufactured to your own specification. To ensure the correct amount of tiles are ordered please list the dimensions of the area you are tiling and we will calculate the amount needed on your behalf.

3. If you have an idea in mind but are unsure as to what to order our esteemed designers are here to help. Simply send us the plans and we will send you various design options listing suggested materials too.
4. Email your selection to **US** (Insert email address) Please be sure to quote the correct product codes!
5. Once we receive your order we will calculate the cost and send you a quote outlining the total costs including delivery. There are no hidden charges!
6. On your acceptance of our quote **WE** will forward a sales agreement for you to sign. Signing the agreement means you consent to pay a deposit of 50% of the total cost in to any HSBC bank. HSBC have an agreement with **US** to ensure your 50% deposit remains safely with them until you take delivery of your order.

7. The UK's transport company RJJ Freight Limited will be responsible for delivering your order to your door in perfect condition.
8. Upon receiving the goods and checking that they have arrived in sound condition you will be asked to sign the delivery note and invoice. You then simply pay the remaining balance to RJJ Freight Limited and they will issue you with a receipt.

n.b. We hold adequate insurance for its exported goods; please report any damages immediately and we will send replacements to you within a week.

0039.335.8271059



CAIRO

ROMA

INFO@INVESMTNET-STONES.COM

WWW.INVESTMENT-STONES.COM